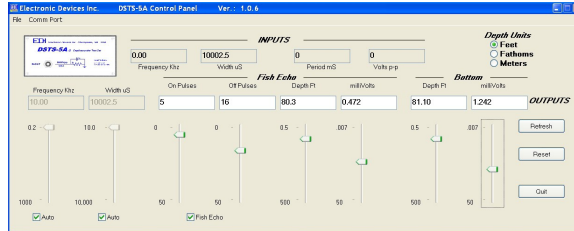




ELECTRONIC DEVICES INC.

P.O. BOX 15037, CHESAPEAKE, VA 23328 • PHONE (757) 421-2968 • FAX (757) 421-0518



Doc 10612

DSTS-5A Control Panel Ver 1.0.6

This manual covers the operation of the DSTS-5A Control Panel application for Windows. The Control Panel is designed for use with the DSTS-5A series of depth sounder test sets and provides a quick and easy way to setup most of the functions the DSTS_5A can provide. Bottom and fish depth can be set as well as the echo amplitudes for each. When quitting the application, the Control Panel saves it's parameters to a .ini file; the next time it is run it will load the previous settings.

Hardware requirements are minimal, the only requirement being a free serial port or USB to RS232 adapter for the DSTS-5A to connect to.

Installing the Software

The Control Panel is installed by copying the "DSTS-5A_V1_0_6 .EXE" file to your hard drive or memory stick. The program is stand alone and does not write to the registry. If you want to remove the program, just erase it.

Connecting the DSTS-5A

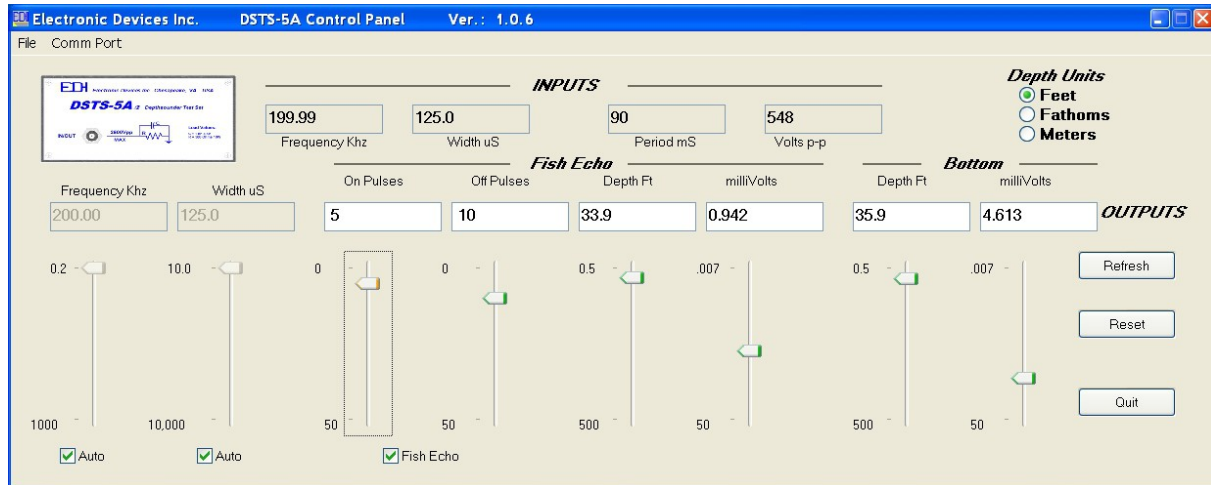
The DSTS-5A connects to the serial port on the computer the application is running on. Any standard DB9 serial cable will work. After connecting the DSTS-5A to the computer's serial port, apply power to the DSTS-5A and run the program.

Com Port Choice

The first time the program is run, the "COMM PORT SELECT" window will pop up. A list of available com ports is displayed. Choose the appropriate com port and click on "OK". A progress bar displays while the program loads and the Control Panel appears shortly thereafter.

Control Panel Layout

The top row of readouts show the characteristics of the incoming pulse from the depth sounder.



In the illustration the depth sounder is transmitting a 199.99 KHz pulse 125uS wide every 90 mS with a peak to peak voltage of 548 volts.

The bottom row readouts display what is being sent back to the depth sounder. In this case, fish echoes are being displayed in addition to the bottom echo. The fish echo will be generated for 5 pulses from the sounder and will be off for the next ten pulses. This repeats, printing a series of dashes on the depth sounder screen at the 33.9 foot level. The amplitude of the fish echo is set to 0.942 mV rms. The bottom echo is set to 35.9 feet with a reply level of 4.613mV.

Sliders

Slider type controls are provided to set the various parameters such as depth, amplitude, etc. Some sliders such as the frequency, width and fish echo will not work until the check box is clicked to activate the function. The sliders may be changed using the mouse, up/down arrows, or by typing the value into the box above the slider.

Control buttons

Three buttons on the right side are Refresh, Reset, and Quit. Refresh directs the Control Panel to re-read the data from the DSTS-5A. Reset sets all parameters to the defaults, depth equals 30 feet and the reply echo is set to the maximum 50mV rms. The Quit button saves the current settings and exits. Clicking the red X will exit without saving your settings.

File Menu

The File menu at the upper left can be used to store the current Control Panel settings to a file. This is so different setups can be saved for different depth sounders.

Comm Port Menu

The Comm Port menu displays a list of all comm ports on the computer. It is used to select a different comm port. Multiple instances of the Control Panel can be run as long as there is a comm port available for each instance.